

Year 6 Evolution and Inheritance

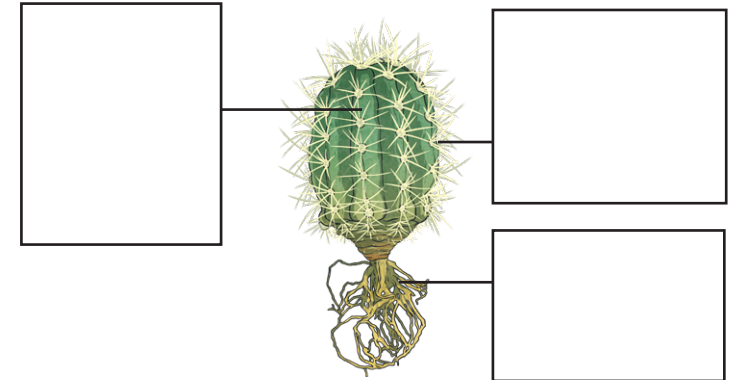
Fill in the gaps to complete the sentences.

All _____ things are made of _____. In the centre of a cell is the nucleus. This is where all the _____ is stored.

The genetic material is contained in chromosomes that are made of _____. This makes us who we are.

Keywords: DNA, cells, genetic material, living

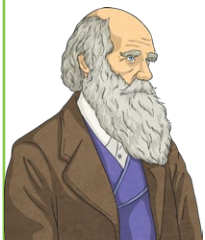
A cactus is adapted to survive in dry conditions. Label its adaptations on the diagram.



Complete the sentence.

Charles Darwin developed the theory of _____.

Who else came up with the same theory?



List three ways a lion is adapted to catch prey.

1. _____
2. _____
3. _____



Is this statement true or false?

'Variation is when characteristics of an animal or plant are different, caused by inherited and environmental factors.'

Year 6 Evolution and Inheritance

Variation in a species can be **environmental** (the conditions around us) or **inherited** (from our parents).

Draw lines to match the characteristic to its correct category.

eye colour

tattoo

ear-piercing

blood group

scar

inherited

environment

Describe how the Galapagos finches help to support Darwin's theory.

Underline the words that are spelt wrong, then rewrite the sentence correctly.

Aminals and palnts have special features that make them better adpated to their enviroment so they are more likely to surviv.

List three ways a penguin is adapted to live in a cold climate.

1. _____

2. _____

3. _____

Year 6 Evolution and Inheritance

Living things are classified using the Linnaean system.

Fill in the vowels to complete the words.

K_ngd_m

Phyl_m

Cl_ss

_rd_r

F_m_ly

G_n_s

Sp_c__s

Why do scientists use the Linnaean classification system?

What language is used when naming different species?

Greek

Latin

English

Can you explain why?

Classify the following organisms into two groups and then explain why you classified them this way.

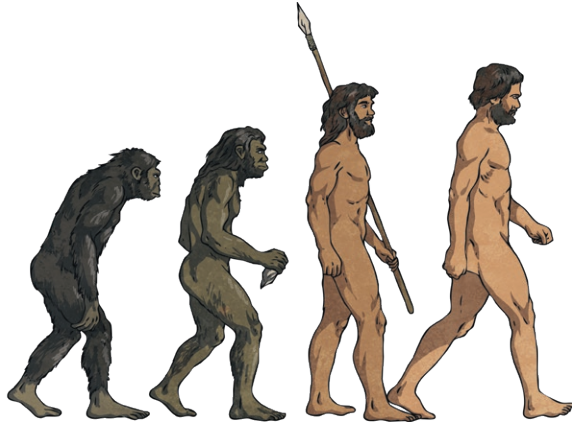
human dolphin nettle buttercup slug bluebell orchid squirrel

Group 1 _____

Group 2 _____

Year 6 Evolution and Inheritance

Using the diagram, list ways in which humans have changed over time.



How are fossils formed?

Tick the correct answer.

Mary Anning spent her childhood...

- searching for treasure.
- fossil hunting.
- searching for minibeasts.

Why are fossils so important to the theory of evolution?

Extension Question

What other evidence do we now have for the theory of evolution?

Year 6 Evolution and Inheritance - Answers

Fill in the gaps to complete the sentences.

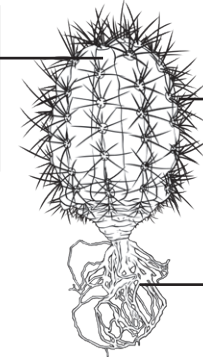
All **living** things are made of **cells**. In the centre of a cell is the nucleus. This is where all the **genetic material** is stored.

The genetic material is contained in chromosomes that are made of **DNA**. This makes us who we are.

Keywords: DNA, cells, genetic material, living

A cactus is adapted to survive in dry conditions. Label its adaptations on the diagram.

Water stored in the body of the cactus.



Spines instead of leaves to prevent water loss.

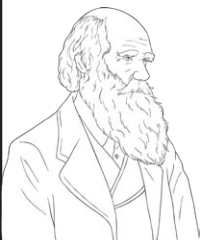
Spread out roots.

Complete the sentence.

Charles Darwin developed the theory of **evolution**.

Who else came up with the same theory?

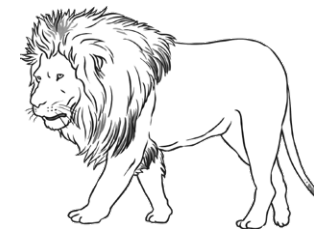
Alfred Wallace



List three ways a lion is adapted to catch prey.

Pupils may come up with a variety of answers, such as:

- **sharp teeth to bite;**
- **sharp retractable claws to grab their prey;**
- **rough tongue to help when eating;**
- **eyes at the front of its head for stalking;**
- **strong leg muscles for running;**
- **sandy colour for camouflage.**



Is this statement true or false?

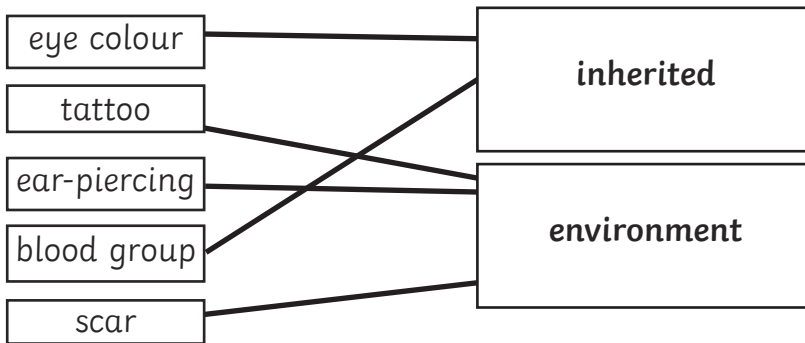
'Variation is when characteristics of an animal or plant are different, caused by inherited and environmental factors.'

True

Year 6 Evolution and Inheritance - Answers

Variation in a species can be **environmental** (the conditions around us) or **inherited** (from our parents).

Draw lines to match the characteristic to its correct category.



Describe how the Galapagos finches help to support Darwin's theory.

There are many species of Galapagos finches, all found on different islands. Each species has a different shaped beak because they all eat different types of food. Darwin's theory is that each different species adapted to the new environment. This adaptation allows each species of finches to survive better.

List three ways a penguin is adapted to live in a cold climate.

Pupils may come up with a variety of answers, such as:

- **streamlined and webbed feet for swimming;**
- **wings shaped like flippers for swimming;**
- **thick skin and blubber to keep warm;**
- **black feathers to absorb the heat from the sun;**
- **will also huddle in large groups to keep warm.**

Underline the words that are spelt wrong, then rewrite the sentence correctly.

Aminals and palnts have special features that make them better adpatated to their enviroiment so they are more likely to surviv.

Animals and **plants** have special features that make them better **adapted** to their **environment** so they are more likely to **survive**.

Year 6 Evolution and Inheritance - Answers

Living things are classified using the Linnaean system.

Fill in the vowels to complete the words.

King**o**m

Phyl**u**m

Cl**a**ss

Ord**e**r

F**a**mily

Gen**u**s

Sp**e**cies

Why do scientists use the Linnaean classification system?

Scientists can identify different species and how closely related different species are depending on their characteristics.

What language is used when naming different species?

Greek

Latin

English

Can you explain why?

Latin is a language that can be used all over the world.

Classify the following organisms into two groups and then explain why you classified them this way.

human dolphin nettle buttercup slug bluebell orchid squirrel

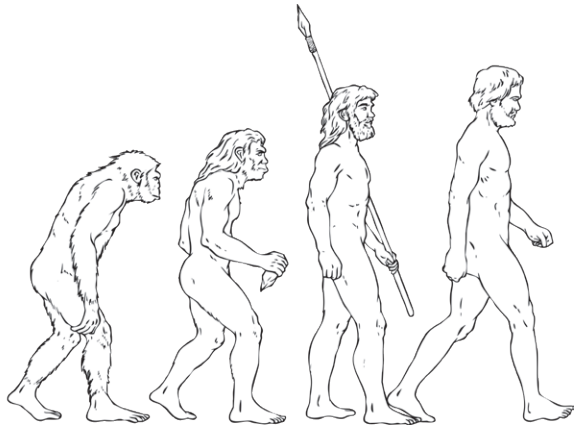
Group 1 **humans, dolphin, slug, squirrel**

Group 2 **nettle, buttercup, bluebell, orchid**

These organisms are either plants or animals and are separated into two kingdoms.

Year 6 Evolution and Inheritance - Answers

Using the diagram, list ways in which humans have changed over time.



Humans became taller and more upright. They developed smaller jaws, less body hair and larger brains.

How are fossils formed?

Fossils are formed when an animal or plant dies. Mud and soil covers the dead animal. When the soft tissues rot away, it leaves behind the bones or the shell. Sediment will build up on top, eventually hardening into rock.

Tick the correct answer.

Mary Anning spent her childhood...

- searching for treasure
- fossil hunting**
- searching for minibeats

Why are fossils so important to the theory of evolution?

Fossils provide us with evidence of organisms that lived on Earth millions of years ago. They help to support Darwin's theory of evolution. Fossils show us how organisms have changed over a long period of time.

Extension Question

What other evidence do we now have for the theory of evolution?

DNA